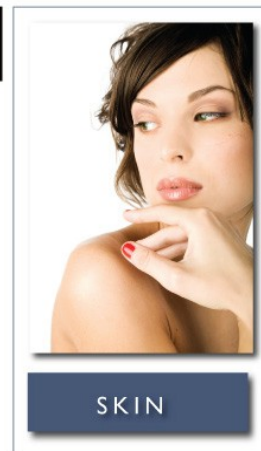


PRODUCT PROFILE



Serum

Eye Serum contains exclusive combination of pure Retinol and an essential mineral complex. Intensive anti-wrinkle moisturizing treatment works all night to reduce expression lines and deep wrinkles.

It delivers all the visible anti-aging benefits of Retinol, the purest form of Vitamin A, in a gentle formula that's effective over time.

Retinol is renowned for helping correct the look of deep lines and dark spots. Soon, laugh lines, crow's feet and lines around the mouth all seem less obvious. In time, wrinkles and deep expression lines will be less apparent. Age spots will seem less noticeable. Your skin will look radiant.

Directions: After cleansing gently dab a small amount around the entire eye area, patting gently until product is absorbed into skin. Works well under makeup. You may experience mild tingling or redness during use. This is normal and should be temporary until your skin adjusts. Apply a sunscreen of SPF 15 or higher during the day while using this product.

Precautions: For external use only. When using this product, avoid getting into eyes. If contact occurs, rinse thoroughly with water. Stop use and ask a doctor if rash or irritation develops and lasts. Keep out of reach of children. If swallowed, get medical help or contact a Poison Control Center right away.

Ingredients:

Water (Aqua)

C12-15 Alkyl Benzoate

Caprylic/Capric Triglyceride

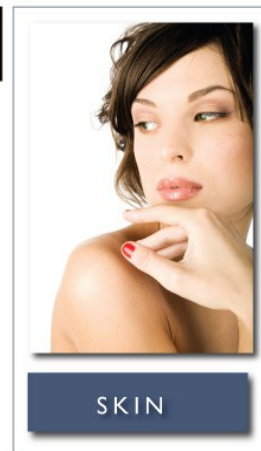
Glycerin

Cyclopentasiloxane

Dimethicone

Arachidyl Alcohol

PRODUCT PROFILE



Phenoxyethanol
(cont. from p.1)

Eryngium Maritimum Callus Culture Filtrate
Euterpe Oleracea Fruit Extract
Avena Sativa (oat) Kernel Extract
Ceramide 3
Betaine
Hydrolyzed Sericin
Rubus Fruticosus (Blackberry) Leaf Extract
Spilanthes Acmella Flower Extract
Acrylates/Dimethicone Copolymer
Arachidyl Flucoside
Beeswax
Behenyl Alcohol
Butylene Glycol
Caprylyl Glycol
Cetearyl Alcohol
Chlorphenesin
Isohexadecane
Laureth-23
Maltodextrin
Phospholipids
Polysorbate 80
Propylene Glycol
Retinol
Silica
Sodium Acrylate/Acryloyldimethyl Taurate Copolymer
Tetrasodium EDTA
Tridecyl Phosphate

PRODUCT PROFILE

